

Thanks for shopping with Improvements®!

Media Saver Music & Video Converter

Item # 431937

USER MANUAL- AFTER INSTALLATION.

NOTE: MAKE SURE THE DRIVER AND THE SOFTWARE ARE INSTALLED PROPERLY BEFORE RUNNING THIS PROGRAM

PROPERLY REMOVE THE DEVICE FROM YOUR COMPUTER ONLY AFTER EXITING THE PROGRAM.

DO NOT USE THIS DEVICE WITH A USB EXTENSION CABLE AND/OR A USB HUB.

IMPROVEMENTS®
ImprovementsCatalog.com

To order, call
1-800-642-2112
West Chester, OH 45069

1112

If you have any questions regarding this product, call 1-800-642-2112 and ask for our product specialists (Mon.-Fri. 9:00-5:00 EST) or e-mail: productspecialist@improvementscatalog.com
See many more products on the Internet!
www.ImprovementsCatalog.com

Instructions:

A. Screen and panel



Button/Icon	Name	Description
	AV Device	Select a AV Device and video sources(Composite / S-Video)
	Record	Start / Stop Record
	Capture	Capture a image
	Stop / Play	Stop / Play AV Source
	Volume Control	Drag slider bar to adjust volume
	Mute	Turn on/off audio
	Open	Select Media files
	Pause	Pause Media playback
	Browse	Browse Media file
	Previous / Next	Skip to play Previous/Next Media file
	Show Advanced Panel	Show/Hide Advanced Panel
	Open Floating Panel	Show Floating Panel
	Setting	Advanced setting

B. AV Setting

After proper Analog TV devices and drivers are installed on the pc, the Analog TV will be available. Please follow steps below to enjoy Analog TV on your pc:

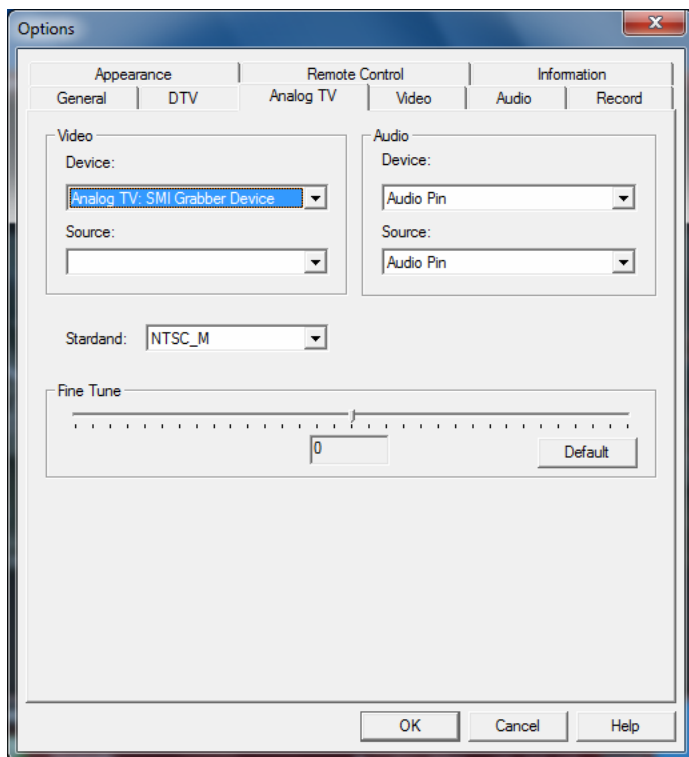
1. Click 
2. Select "AV: SMI Grabber Device".
3. The following box will pop up:



There are two video sources for choosing (Composite and S-Video will be shown in the box below) which are up to your Analog devices and drivers. After Video Source is selected, click OK, the software will begin to scan channels automatically.



C. Settings



Right click Video window and click Options, you will open Options box for advanced settings.

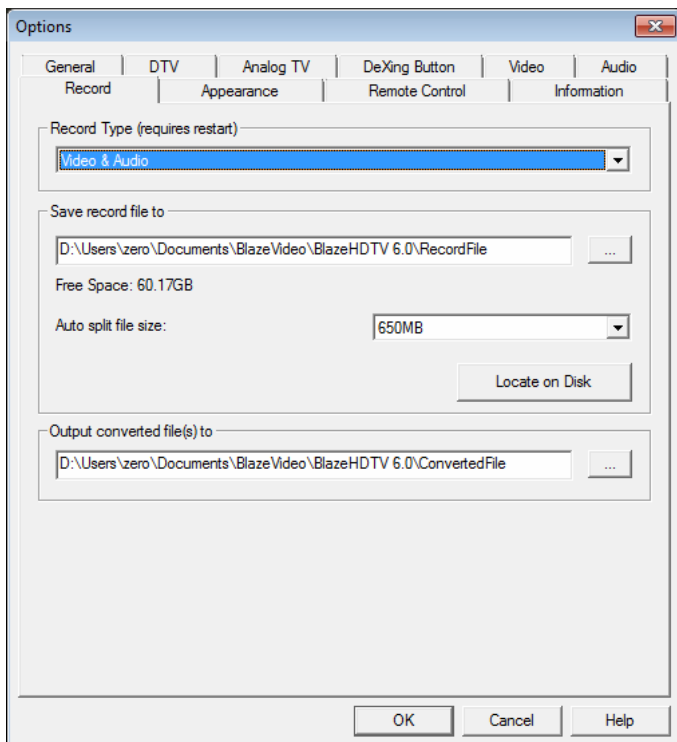
Please make sure that you have chosen the correct Video and Audio device.

Default

Video: Analog:SMI Grabber Device

Audio: Audio Pin

D. Video Standard



Record Type:

Video & Audio: record HDAV with both video and audio

Audio only: record HDAV with audio only

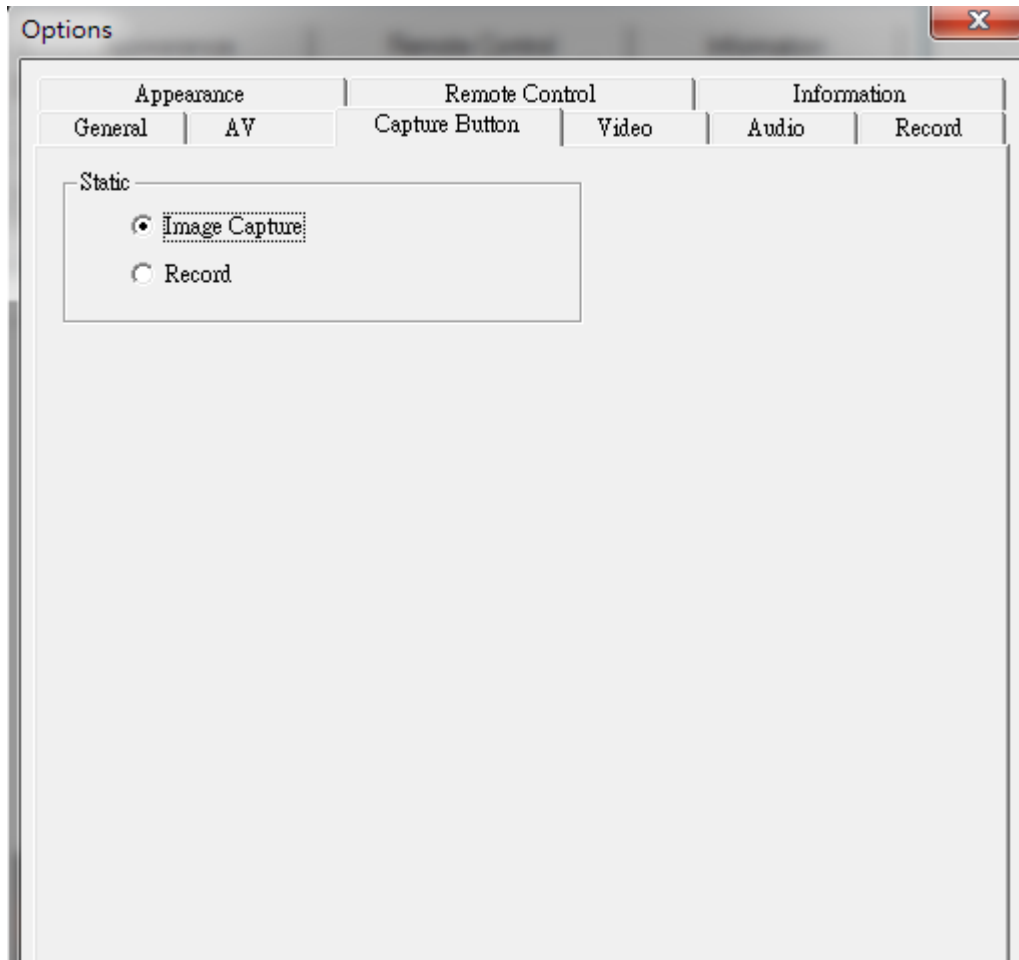
Save Record File to: Specify the path to save the record file

Auto split file size: Set the recording file size.

Locate on Disk: To quickly open the record file's folder.

Output converted files to: Specify the path to save the converted files.

F. Capture Mode



Note: Capture Button is the button on the device. Clicking the button can take a snapshot or start capturing video from the video source depending on what you have selected.



How To Use

1. Preparation

Connect the device to the media player with the RCA cable (OR S-VIDEO), connect the USB cable to the computer.

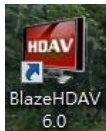


USB DIGITAL CONVERTOR (DEVICE)



Media Player

2. Run BlazeHDAV



Double click on desktop or find it in “All Programs” -> “BlazeHDAV”

3. In BlazeHDAV

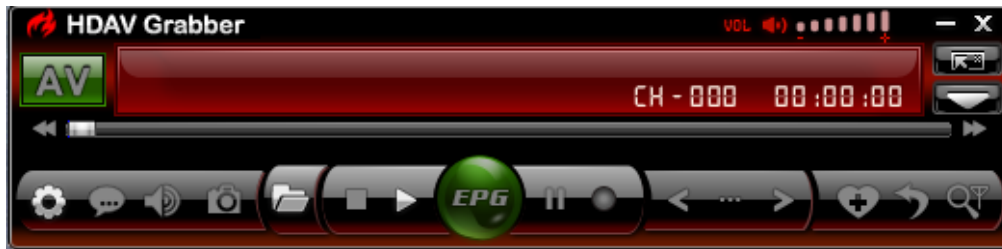
You will see a display and a panel as shown below.

If you see a blank screen, please check the media player and make sure it is playing/powerd on




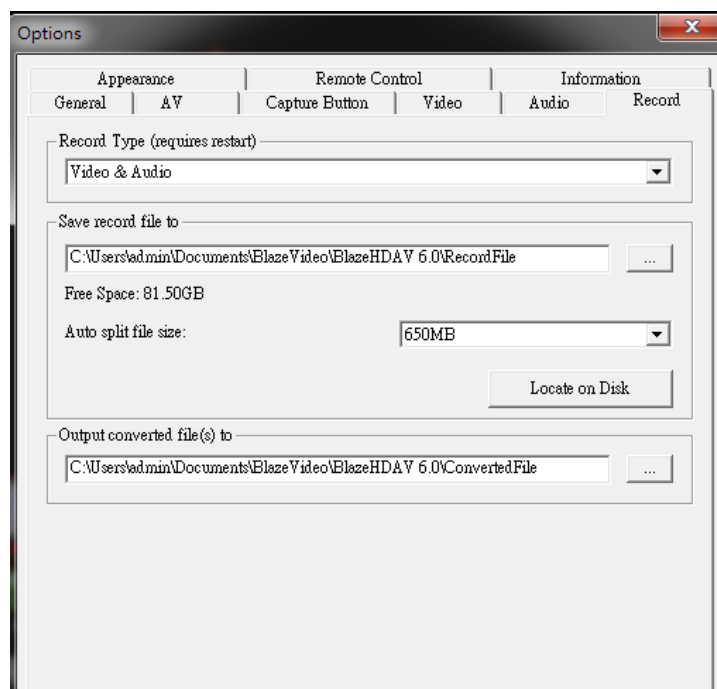
4. Setup in BlazeHDAV

Click  on the panel



5. Setup in BlazeHDAV – Tab “Record”

A. (Optional - You can select the format which you want) Select Record Type: Video & Audio and click  to select the save folder




B. (Optional - You can select the folder which you want) Select “Desktop” and click “OK” to confirm.




6. Snapshot



- A. Click  to take a snapshot, the captured image will be displayed in the Capture window, (default saves as .bmp file in "My Pictures" by sequence number 1, 2, 3, etc.) You can freely capture, preview, delete, copy or save the snapshot from the Capture window.




- B. The snapshot will be placed on the list.
C. Choose the snapshot and click  to save your snapshot.




- D. Select the file directory and click "OK" to confirm.



7. Record

A. Click  to record a video



B. The program will start recording. You can stop recording anytime by clicking 

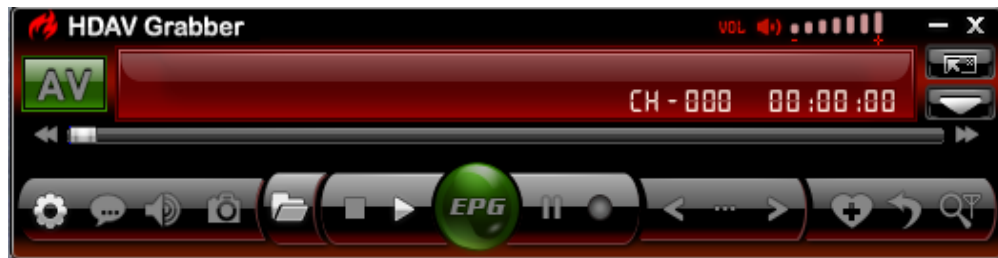


C. The recording will be placed under the folder that you selected in the setup menu.

8. Take a snapshot or record a video by clicking the CAPTURE BUTTON



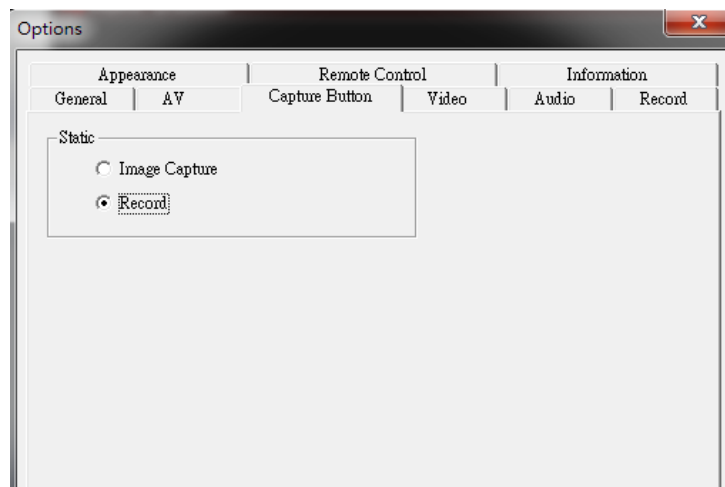
A. Click  on the panel



B. Select “Capture Button” tab. Select the option which you would like to use After selection, click “OK” to save the setting.

Option 1 – Image Capture

Option 2 – Record



AFTER CLICKING THE CAPTURE BUTTON, THE FILE WILL BE SAVED IN THE SAVE FOLDER WHICH YOU SELECTED IN THE SETUP MENU.

Troubleshooting

Problem	Cause	Solution
Screen is black and white	Picture adjustment settings are incorrect.	Enter setup and change the picture adjustment settings to your preference.
	Incorrect video standard selected	Try all other video standards and then select the one with optimal quality.
No display on screen	Video source wires are not connected correctly.	Disconnect the wires and reconnect as described under the "How to use" section of this manual.
Fuzzy or bad image quality	Incorrect video standard selected	Try all other video standards and then select the one with optimal quality.
Flashing screen		
I cannot control the video directly	The software itself does not control the live streaming of the video.	The streaming of the video can only be controlled on the device that is currently playing the medium.
I cannot get the program to stop recording.	You are pressing the Stop button for playback.	Press the Stop button below the Record button.
Cannot detect device	Some motherboards have known issues with some USB devices	Try the device on another computer.